



Tasmanian Endemic Birds and Mammals

Inala Nature Tours

OVERVIEW

Our popular and comprehensive tour of Tasmania offers all of Tasmania's 12 endemic birds plus iconic mammals including Eastern Quoll, Wombat and Platypus. This itinerary makes the most of some of Tasmania's most iconic sites, as well as the stops enroute that are the best local secrets. Guests will have the opportunity to view some of our most unique bird families, including all four robin species, and raptors such as the Tasmanian subspecies of the mighty Wedge-tailed Eagle and the ghostly white morph Grey Goshawk. We have also included special excursions to the breathtaking Bruny Island, home of Inala Conservation Reserve and an outpost for the critically endangered Forty-spotted Pardalote, and a pelagic cruise of the Southern Ocean to encounter an array of seabirds.

ITINERARY OUTLINE

Day 1. Wednesday 27 October 2027. Arrive Hobart.

Day 2. Thursday 28 October 2027. Maria Island.

Day 3. Friday 29 October 2027. Pelagic cruise.

Day 4. Saturday 30 October 2027. Eaglehawk Neck to Bruny Island.

Day 5. Sunday 31 October 2027. Full day Bruny Island and night tour.

Day 6. Monday 1 November 2027. Bruny Island to Hamilton.

Day 7. Tuesday 2 November 2027. Mt Field & Styx Valley.

Day 8. Wednesday 3 November 2027. Hamilton to Cradle Mountain and night tour.

Day 9. Thursday 4 November 2027. Cradle Mountain National Park and Devils twilight tour.

Day 10. Friday 5 November 2027. Cradle Mountain to Launceston and depart.



Strong-billed Honeyeater – Craig Smith

DETAILED ITINERARY

Day 1. Wednesday 27 October 2027. Arrival in Hobart for main tour

Today has been set aside as an arrival day so you are free to arrive at any time that suits your travel plans. Please make your own way to the hotel in the city (please see notes at the end of this itinerary) and we will meet at the hotel at 18:30 for a brief orientation and welcome dinner.

Accommodation: Hobart Hotel (en suite rooms). **Meals Included:** D.

Day 2. Thursday 28 October 2027. Maria Island and drive to Eaglehawk Neck.

We leave this morning to travel up the East Coast to Triabunna, where we will take the short 30-minute ferry ride across to Maria Island, an island with a rich history, a World Heritage Listed Probation Station, fossil cliffs and a great array of wildlife. On the way across to Maria Island, we shall look out for seals and dolphins. Maria is a fascinating island with a wide variety of bird and mammal species. Of the mammals, we can expect to see Forester (Eastern Grey) Kangaroo, Tasmanian Pademelon, Bennett's (Red-necked) Wallaby and Common Wombat. Maria Island also has an abundant bird assemblage, with 11 of the 12 Tasmanian endemics occurring here. We shall use our time to stroll slowly around the northern part of the island, with some outstanding scenery and the chance of seeing many bird species including Cape Barren Geese, Australasian Pipit and Flame Robins on the grazed grasslands and the chance of Swift Parrot, migratory Cuckoos and several species of Honeyeaters in the wooded areas. In the late afternoon, we will head back on the ferry.

Accommodation: Hotel on Tasman Peninsula (en suite rooms). **Meals included:** B, L, D.

Day 3. Friday 29 October 2027. Southern Ocean Pelagic.

This morning, we will board a charter vessel (weather permitting), making our way into the vastness of the Southern Ocean in our quest for pelagic birds. High species diversity and the nearness of the continental shelf have earned Tasmania an international reputation as an excellent place to see pelagic species. Not long after we depart Pirate's Bay, we will hopefully encounter Short-tailed Shearwater in considerable number. This is one of the finest places on the planet to see a diversity of albatross, with Antipodean & New Zealand Wandering, Northern & Southern Royal, Shy, Campbell, Black-browed, and Indian Yellow-nosed Albatross all possible. With land still in sight we will reach the continental shelf and begin to lay a berley trail from the back of the boat. Possible petrels include White-chinned, Great-winged, Grey-faced, the striking White-headed, Gould's, Cook's and Mottled. Shearwater diversity is also good with Hutton's, Fluttering, Sooty and Short-tailed Shearwater all possible. Wilson's, Grey-backed and



Wombat – Christine Rand

White-faced Storm Petrels and Fairy Prion are also regularly seen. Mammals we may encounter include Australian Fur-seals, Hump-backed Whale, Common and Bottlenose Dolphin. On our return to shore there will also be a chance to visit some nearby geological formations and if time permits explore Tasman National Park before heading back to our hotel.

If you choose not to partake in the Pelagic cruise, you can have the day to yourself to explore the lovely beaches and forests near by the hotel, please let us know your preference when you book the tour. In the event your cruise is cancelled, your guide will provide a day of touring in the southern region of Tasmania.

Accommodation: Hotel on Tasman Peninsula (en suite rooms). **Meals Included:** B, L, D.

Day 4. Saturday 30 October 2027. Tasman Peninsula to Bruny Island, including Marion's Bay and Orielton Lagoon.

Today we have a further chance to explore the Tasman Peninsula before heading back towards Hobart, visiting some wetlands and coastal locations enroute such as Marion's Bay and Ramsar listed Orielton Lagoon for a variety of waders and shorebirds. We will then head down to Bruny Island. Situated 40km south of Hobart, Bruny Island is separated from the Tasmanian mainland by the D'Entrecasteaux Channel and accessed by a vehicle ferry. The ferry trip takes approximately 15 minutes where one can enjoy some wonderful scenery. This afternoon we will visit Bruny's southern coastline to view the second oldest lighthouse in Australia, and search for species such as Tawny-crowned Honeyeater, Olive Whistler and Yellow-tailed Black-cockatoo. Here we also have a chance to see the Tasmanian sub-species of Short-beaked Echidna, one of Australia's two egg-laying mammal (monotreme) species. On one of our two nights on Bruny, depending on best weather conditions, we will visit the Short-tailed Shearwater colony to view these species at their burrows and will take an evening drive in search of Tasmania's nocturnal marsupials. We will hope to see some species which are now restricted to Tasmania including Eastern Quoll (a relative of the Tasmanian Devil) and Tasmanian Pademelon. Bennett's Wallaby and Brush-tailed Possum are also common here and rare golden/white colour morphs of both these species can sometimes be found.

Accommodation: Cottages South Bruny Island (en suite cabins). **Meals Included:** B, L, D.

Day 5. Sunday 31 October 2027. Full day on Bruny Island.

Today we have a full day to explore Bruny Island. We will start the day birding at 'Inala', a privately owned 1,500-acre wildlife sanctuary which is home to all 12 Tasmanian endemic bird species, including one of the largest known colonies of endangered Forty-spotted Pardalote. Strong-billed, Yellow-throated and Black-headed Honeyeaters, Dusky Robin and Green Rosella



Forty-spotted Pardalote – Akos Lumnitzer

are also regulars here. Several hides and platforms have also been built around the property which provide close views of some very special species, including a variety of raptors. At this time of year, we can expect to see the endangered white colour morph of Grey Goshawk, White-bellied Sea-eagle, Brown Goshawk, Brown Falcon and if we are lucky, Wedge-tailed Eagle. We will also visit a variety of habitats on the island, from coastal beaches for Hooded Plover, Pied and Sooty Oystercatcher, Pacific and Kelp Gull, to rainforest areas in search of Pink Robin and the endemic Scrubtit, Tasmanian Scrubwren and Tasmanian Thornbill.

Accommodation: Cottages South Bruny Island (en suite cabins). **Meals Included:** B, L, D.

Day 6. Monday 1 November 2027. Bruny Island to Mount Field area. and Gould's Lagoon.

Today we depart Bruny Island and spend a bit of time exploring the reserves in the Hobart area including Kunanyi (Mount Wellington). This mountain, at a height of 1,270m (around 4,150 feet), affords spectacular views of the city and surrounding landscape on a clear day. Further endemic highlights we will look for today include Green Rosella, Tasmanian Native Hen, Black Currawong and Yellow Wattlebird. We will also visit a lagoon for the chance to see a variety of waterbirds like Australasian Shoveler, Australian Shelduck and Black-fronted Dotterel before heading to our accommodation for tonight, close to Mt Field National Park. Tonight, we will enjoy a hearty dinner before settling into our cosy rooms.

Accommodation: Mount Field area (en suite rooms). **Meals Included:** B, L, D.

Day 7. Tuesday 2 November 2027. Mount Field and Styx Valley area.

Today we will spend the entire day exploring Mount Field National Park and surrounding areas. This area is an excellent back up site for our endemic target species, notably Scrubtit and Black Currawong, and is also a great place to experience a range of habitats from fern gullies with waterfalls, to alpine heathland and cool temperate rainforest boasting some of the tallest trees in the world - the mighty Mountain Ash (*Eucalyptus regnans*). Today we also have our first chance of seeing the bizarre Platypus, the other species of Australian monotreme. In the late afternoon we will return to our accommodation for a relaxed second night.

Accommodation: Mount Field area (en suite rooms). **Meals Included:** B, L,D.

Day 8. Wednesday 3 November 2027. Mt Field area to Cradle Mountain National Park.

This morning, we will travel north to Cradle Mountain National Park. While today is largely a travel day, we will enjoy wonderfully diverse scenery and stop many times en-route to bird and stretch our legs including at an Alpine Lake with incredible flora and landscape and the possibility of Flame Robin and Striated Fieldwren. If time allows, we shall incorporate a visit to a



Pink Robin – Cat Davidson

beautiful location near Latrobe with an excellent chance of seeing Platypus. We will arrive at our accommodation at the foot of Cradle Mountain National Park in the late afternoon. Tonight we shall take a night drive into the National Park after dinner, where we will hope to see Spotted-tailed Quolls, Eastern Quolls or even the iconic Tasmanian Devils.

Accommodation: Cradle Mountain (en suite rooms). **Meals Included:** BLD

Day 9. Thursday 4 November 2027. Cradle Mountain area.

Today we have a full day to explore the spectacular landscape around Cradle Mountain. This should provide a good chance to see more of Tasmania's endemic bird species which we may have missed previously, such as Black Currawong and Scrubtit. In addition to the great birding, we can view endemic Tasmanian rainforest flora with ancient Gondwanan connections such as Pencil and King Billy Pines, Myrtle and the famous Tanglefoot Beech (*Nothofagus gunnii*) which is Tasmania's only deciduous tree. The National Park is also a great area to view the adorable Common Wombat. While watching for Pink Robin and Crescent Honeyeater in beautiful riverine rainforest habitat, we will also have more chances of spotting Platypus.

During the day we shall include a visit to Walheim, the replica hut built on the site of Gustav Weindorfer's original home, a naturalist whose passion was instrumental in the establishment of the National Park protection of this area.

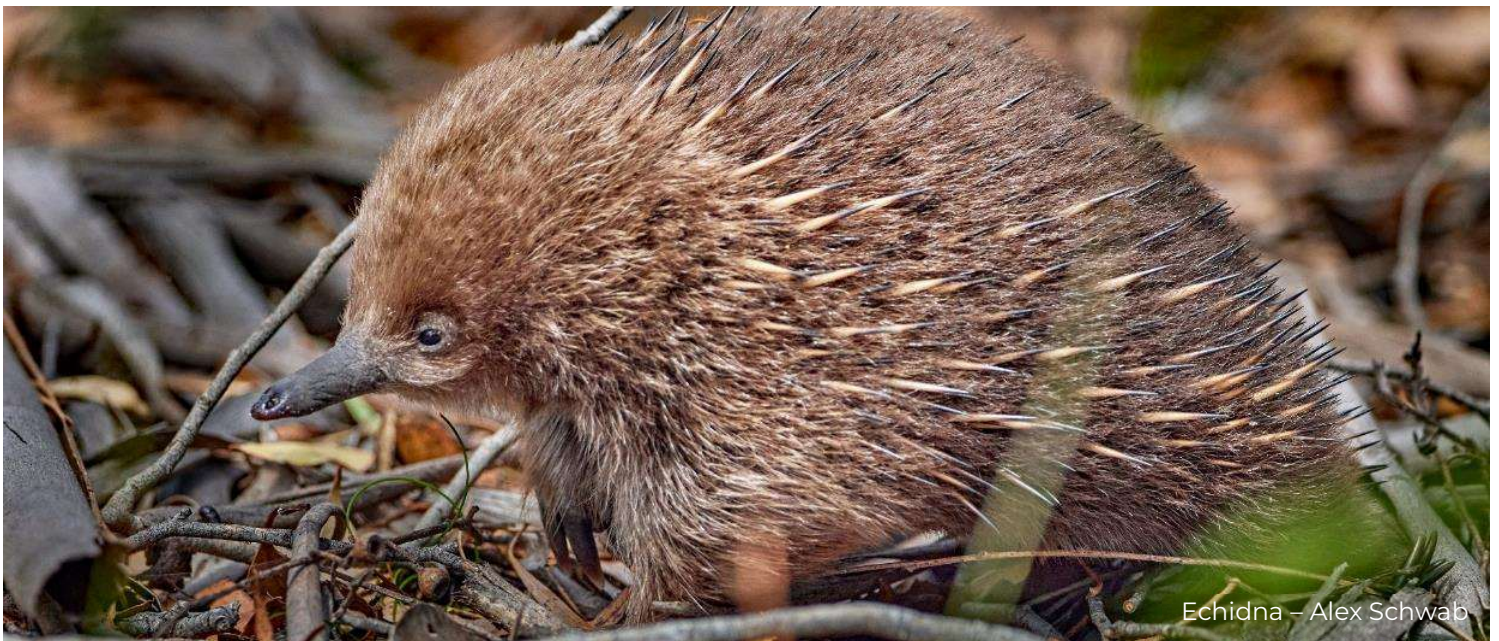
After we have settled into our accommodation, we will enjoy an exclusive twilight tour of the local wildlife conservation sanctuary, home primarily to Tasmanian Devils, as well as Spotted-tail and Eastern Quolls.

Accommodation: Cradle Mountain (en suite rooms). **Meals Included:** B, L, D.

Day 10. Friday 5 November 2027. Launceston and depart.

This morning, we travel to Launceston after breakfast where you will be able to connect with a flight of your choice to one of the capital cities. If time permits, we will visit some wetlands en-route where there is a chance to view several wetland species including Australasian Swampheaven, Spotless Crake, Australian Shelduck, Black-fronted Dotterel and Little Grassbird. *Please note flights from Launceston should be made from 1pm onward as the guide will deliver those guests to the airport around midday.*

Meals Included: B.



Echidna – Alex Schwab

ADDITIONAL INFORMATION:

Group size: 6-12 participants and 1 Inala guide.

Inclusions: 9 nights en-suite accommodation, specialist guiding and transport for day and night tours as outlined above, all meals as outlined in the itinerary, activities outlined in the itinerary (including the pelagic cruise and Maria Island excursion), National Park entry fees, Bruny Island ferry fares, GST.

Exclusions: International or domestic Australian airfares, airport transfers on arrival, alcoholic and non-alcoholic beverages and expenses of a personal nature (snacks, travel insurance, internet, laundry, tips etc).

PLEASE NOTE:

- **Additional services:** We can arrange either self-guided or guided extensions to other parts of Tasmania or Australia to compliment this tour. Please enquire at the Inala office and we will happily cater for you through our licensed travel agency.
- **Arrival in Hobart:** There is a regular shuttle bus service between Hobart airport and the main hotels in the city. Details on the costs and timing of the shuttle can be found on the [Skybus](#) website. Alternatively, you may wish to take a taxi to the city – there is no need to pre book these, they are readily available outside the terminal building.
- **Meals and drinks:** Breakfast generally consists of a continental style breakfast with cereal, fruit and yoghurt and tea/coffee. Full cooked breakfast is not generally offered at most locations. Lunch will generally consist of a packed lunch style meal eaten in the field, with sandwich/wrap, fruit, and a drink. Dinner is usually two courses and consists of several options for main with the choice of either an appetiser or dessert. Drinks (soft and alcoholic) are generally not included but at lunches and breakfasts juice may be made available.
- **The itinerary:** Whilst we aim to follow the itinerary as planned, please note that the itinerary provided should only be used as a guideline. Depending on individual trip circumstances, weather, and local information, the exact itinerary may not be strictly adhered to. The guides reserve the right to make changes to the itinerary as they see fit.
- **The pelagic:** This activity is weather dependant and there is no guarantee that we will be able to do it. Please see specific notes in the itinerary on alternatives should the cruise be cancelled.

[Click here for a separate online doc that answers many of the frequently asked questions about Small Group Tours.](#)

